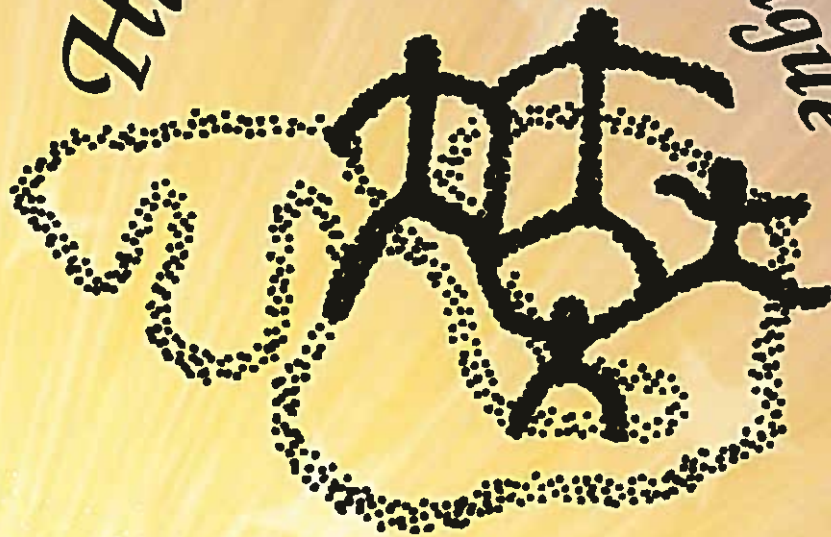


# Hawai'i State Forensic Championships



*Hawaii Speech League*



Kamehameha Schools  
Punahou School

April 11-13, 2019

**State Forensic Championships**  
**Kamehameha Schools and Punahou School**  
**April 11-13, 2019**

SCHOOL	CODE	ST	POI	HI	DI	DUO	INTERP TOTAL	OO	INF	IS	US	IX	ORIG TOTAL	BPF	APF	NLD	CLD	JV	V	DEBATE TOTAL	GRAND TOTAL	
Hilo High School	1						0						0								0	0
Punahou School	2				3		3			1			1			5	5	11	8		29	33
Iolani School	3	1		4	1		6			3	2	5	10	7	9	4	5				25	41
Lellehua High School	4						0	3					3								0	3
Damien Memorial	5						0						0								0	0
Trinity Christian School	6		3				3	2					2	1							1	6
Kahuku High & Inter	7	5	2	4		2	13			2			2				1				1	16
Aiea High School	8				5		5	1	4				5								0	10
Kamehameha Schools	9	10	6	5	7	10	38	4	3	5	8	2	22	5	5	2	4				16	76
University Lab School	10			1			1		2		4		6				2				2	9
Parker School	11		1			4	5					7	7	5		7	1	3	6		22	34
Maryknoll School	12						0						0								0	0
Saint Louis School	13						0						0								0	0
Kalani High School	14						0	1					1								0	1
Waialua High School	15						0						0								0	0
McKinley High School	16		4	2			6	5	5	5			15								0	21
Moanalua High School	17						0						0								0	0
Hawaii Prep Academy	18						0						0								0	0
★ All results are subject to final audit.																						
																						

## **PERPETUAL TROPHIES**

---

---

**INTERPRETATIVE EVENTS SWEEPSTAKES**  
*U.S. Senator Spark Matsunaga*

**ORIGINAL EVENTS SWEEPSTAKES**  
*Mr. Charles Toguchi*

**CADES ■ SCHUTTE DEBATE SWEEPSTAKES**  
*ca des ■ schutte*

**CHAMPIONSHIP SWEEPSTAKES**  
*Ms. Loyal Garner*

**DISTRICT SWEEPSTAKES TROPHY**  
*National Speech and Debate Association*  
*Cumulative Points*

**DISTRICT SWEEPSTAKES PLAQUE**  
*National Speech and Debate Association*  
*Top 5 Speech & Top 5 Debate; at least 3 entries in each*

**DISTRICT SPEECH PLAQUE**  
*National Speech and Debate Association*  
*Top 8 Speech Entries*

**DISTRICT DEBATE PLAQUE**  
*National Speech and Debate Association*  
*Top 6 Debate Entries*

**DISTRICT CONGRESS PLAQUE**  
*National Speech and Debate Association*  
*Top 5 Congress entries*

## **WINNERS**

---

---

Kamehameha Schools

---

*Kapua Reeves & LeaDan Yee*  
Coach

---

Kamehameha Schools  
School

---

*Kapua Reeves & LeaDan Yee*  
Coach

---

Punahou School  
School

---

*Alannah Collat*  
Coach

---

Kamehameha Schools  
School

---

*Kapua Reeves & LeaDan Yee*  
Coach

---

Punahou School  
School

---

*Alannah Collat*  
Coach

---

Kamehameha Schools  
School

---

*Kapua Reeves & LeaDan Yee*  
Coach

---

Kamehameha Schools  
School

---

*Kapua Reeves & LeaDan Yee*  
Coach

---

'Iolani School  
School

---

*Lauren Morimoto*  
Coach

---

Kamehameha Schools

---

*Kapua Reeves & LeaDan Yee*  
Coach

---

★ All results are subject to final audit.

## CHARLOTTE BOTEILHO STORYTELLING

1 <sup>st</sup>	9T10	Anela Lee	Kamehameha Schools
2 <sup>nd</sup>	7T3	Josie Rackley	Kahuku High & Intermediate
3 <sup>rd</sup>	9T9	Nainoa Arincorayan	Kamehameha Schools
4 <sup>th</sup>	9T8	Lily Mitchell	Kamehameha Schools
5 <sup>th</sup>	3T1	Dylan Dinio	Iolani School
6 <sup>th</sup>	7T5	Evelyn Torres	Kahuku High & Intermediate

## PROGRAM ORAL INTERPRETATION

★ 1 <sup>st</sup>	9P6	Nainoa Arincorayan	Kamehameha Schools
★ 2 <sup>nd</sup>	16P12	Pumehana Holmes	McKinley High School
3 <sup>rd</sup>	6P1	Lauren Baker	Trinity Christian School
4 <sup>th</sup>	7P3	Kayla Pitt	Kahuku High & Intermediate
5 <sup>th</sup>	9P5	Nainoa Visperas	Kamehameha Schools
6 <sup>th</sup>	11P10	Hunter Kalahiki-Arnbrister	Parker School

## KAREN MIYAKADO HUMOROUS INTERPRETATION

1 <sup>st</sup>	9H11	Kaleonahenahe Green	Kamehameha Schools
★ 2 <sup>nd</sup>	3H3	Jordan Shiu	Iolani School
★ 3 <sup>rd</sup>	7H5	Savannah Peskin	Kahuku High & Intermediate
4 <sup>th</sup>	16H16	Aiden Reyes	McKinley High School
5 <sup>th</sup>	7H7	Sanoe Marsh	Kahuku High & Intermediate
6 <sup>th</sup>	10H15	Seth Royston	University Lab School

## DRAMATIC INTERPRETATION

★ 1 <sup>st</sup>	8A9	Jessica Chang	Aiea High School
★ 2 <sup>nd</sup>	9A12	Mahina Amoy	Kamehameha Schools
3 <sup>rd</sup>	9A10	Anela Lee	Kamehameha Schools
4 <sup>th</sup>	2A1	Mari Shoop	Punahou School
5 <sup>th</sup>	2A2	Ellie Sampson	Punahou School
6 <sup>th</sup>	3A3	Mariko Jurcsak	Iolani School

## DUO INTERPRETATION

1 <sup>st</sup>	9D9	Nainoa Arincorayan & Taylor Takahashi	Kamehameha Schools
★ 2 <sup>nd</sup>	11D13	Erica Yost & Stacey Firestone	Parker School
★ 3 <sup>rd</sup>	9D10	Anela Lee & Kaleonahenahe Green	Kamehameha Schools
4 <sup>th</sup>	9D11	Ka'ai I & Alexis Keli'ikipi	Kamehameha Schools
5 <sup>th</sup>	7D6	Jane Bradshaw & Jay Phung	Kahuku High & Intermediate
6 <sup>th</sup>	7D7	Sanoe Marsh & McKenzie Wingate	Kahuku High & Intermediate

## FELY SERRA ORIGINAL ORATORY

★	1 <sup>st</sup> 16Y14	Aileen Chang	McKinley High School
★	2 <sup>nd</sup> 9Y7	Ka'ai I	Kamehameha Schools
	3 <sup>rd</sup> 4Y3	Maggie Titus	Leilehua High School
	4 <sup>th</sup> 6Y4	Lauren Baker	Trinity Christian School
	5 <sup>th</sup> 8Y6	Aiyana Bartolome	Aiea High School
	6 <sup>th</sup> 14Y12	Trista Silva	Kalani High School

## INFORMATIVE SPEAKING

	1 <sup>st</sup> 16Z7	Aileen Chang	McKinley High School
★	2 <sup>nd</sup> 8Z1	Aiyana Bartolome	Aiea High School
★	3 <sup>rd</sup> 9Z3	Taylor Takahashi	Kamehameha Schools
	4 <sup>th</sup> 10Z6	Emily Greaver	University Lab School

## IMPROMPTU SPEAKING

	1 <sup>st</sup> 16W17	Ryan Vanairsdale	McKinley High School
	2 <sup>nd</sup> 9W11	Ka'ai I	Kamehameha Schools
	3 <sup>rd</sup> 3W3	Maria Stevenson	Iolani School
	4 <sup>th</sup> 7W6	Jay Phung	Kahuku High & Intermediate
	5 <sup>th</sup> 9W10	Nainoa Visperas	Kamehameha Schools
	6 <sup>th</sup> 2W2	Ryu Kawajiri	Punahou School

## MYRNA ISHIMOTO UNITED STATES EXTEMPORANEOUS SPEAKING

★	1 <sup>st</sup> 9U6	Evan Gates	Kamehameha Schools
★	2 <sup>nd</sup> 10U7	Coe Trevorrow	University Lab School
	3 <sup>rd</sup> 9U5	Daniel Arakawa	Kamehameha Schools
	4 <sup>th</sup> 3U1	Samuel Rivers	Iolani School

## LYNN LEVINSON INTERNATIONAL EXTEMPORANEOUS SPEAKING

★	1 <sup>st</sup> 3X3	Matthew Sohn	Iolani School
★	2 <sup>nd</sup> 11X8	Zoe Vann	Parker School
	3 <sup>rd</sup> 11X7	Malia Dills	Parker School
	4 <sup>th</sup> 9X6	Noah Blaisdell	Kamehameha Schools

## BEGINNING PUBLIC FORUM DEBATE

	1 <sup>st</sup> 3R4	Connor Arakaki & Kyle Ching	Iolani School
	2 <sup>nd</sup> 9R8	Logan Lau & Keola Kaniho	Kamehameha Schools
	3 <sup>rd</sup> 11R15	Everett Gordon & Amanda Black	Parker School
	4 <sup>th</sup> 3R5	Connor Lee & Mike Tran	Iolani School

## ADVANCED PUBLIC FORUM DEBATE

★	1 <sup>st</sup> 3F5	Maria Stevenson & Samuel Rivers	Iolani School
★	2 <sup>nd</sup> 3F6	Madeline Heyler & Emily Tom	Iolani School
	3 <sup>rd</sup> 9F9	Evan Gates & Lauren Lau	Kamehameha Schools
	4 <sup>th</sup> 9F8	Elijah Lee & Kolby Ross	Kamehameha Schools

## NOVICE LINCOLN-DOUGLAS DEBATE

1 <sup>st</sup>	11N15	Rachel Pessah	Parker School
2 <sup>nd</sup>	2N3	Tilde Oyster	Punahou School
3 <sup>rd</sup>	3N5	William Heyler	Iolani School
4 <sup>th</sup>	9N8	Noah Blaisdell	Kamehameha Schools

## JOEY MIYAMOTO CHAMPIONSHIP LINCOLN-DOUGLAS DEBATE

1 <sup>st</sup>	3C8	Matthew Sohn	Iolani School
★ 2 <sup>nd</sup>	9C13	Daniel Arakawa	Kamehameha Schools
★ 3 <sup>rd</sup>	2C1	Zoe Payne	Punahou School
4 <sup>th</sup>	10C14	Coe Trevorrow	University Lab School

## JUNIOR VARSITY POLICY DEBATE

1 <sup>st</sup>	2J4	Zoey Duan & Audrey Oh	Punahou School
2 <sup>nd</sup>	2J1	Jeanine Yuen & Doran Chang	Punahou School
3 <sup>rd</sup>	11J5	Ellie Carey & Eloise Robertson	Parker School
4 <sup>th</sup>	2J3	Jaimie Lee & Jonathan Wu	Punahou School

## MISAO KUBOTA VARSITY POLICY DEBATE

★ 1 <sup>st</sup>	2V4	Matthew Flores & Cole Okuno	Punahou School
★ 2 <sup>nd</sup>	11V5	Katie Carey & Emily Fetsch	Parker School
3 <sup>rd</sup>	2V3	Carl Bell & Bennet Lum	Punahou School
4 <sup>th</sup>	11V6	Emma Laliberte & Malia Dills	Parker School

## CONGRESSIONAL DEBATE

1 <sup>st</sup>	Christina Albrecht	Punahou School
2 <sup>nd</sup>	Walter Kalowsky	Punahou School
3 <sup>rd</sup>	Jayden Liu	Kamehameha Schools
4 <sup>th</sup>	Sarah Mann	Punahou School
5 <sup>th</sup>	Trae Stevens	Kamehameha Schools
6 <sup>th</sup>	Jonah Faumina	Kamehameha Schools

★ ELIGIBLE TO PARTICIPATE IN THE 2019 NATIONAL SPEECH & DEBATE TOURNAMENT

Dallas, Texas

June 16-21, 2019

★ All results are subject to final audit.



# Hawai'i Speech League Speech Congressional Debate District Qualifier

*Kamehameha and Punahou Schools*

*April 12-13, 2019*

*Senate*

CODE	Last Name	First Name	School Name	SESSION 1			SESSION 2			SUPER			TOTAL			CREDITS							RECIP	PLACE		
				1	2	3	1	2	3	1	2	3	POINTS	SPCHS	AVG	A	B	C	D	P	E	F			SP	TOTAL
2	Albrecht	Christina	Punahou School	6	6		6	6		6	6	6	42	7	6.00	1	2	3	2	1	2	2	4	17		1st
2	Iwamoto	Ryden	Punahou School	5	4		5	4	5				23	5	4.60	7	5	7	3	7	18	18	18	83		
2	Kalowsky	Walter	Punahou School	4			5	5	4	6	6		30	6	5.00	8	8	4	1	3	6	6	2	38		2nd
2	Mann	Sarah	Punahou School	5			4	5		5	6	5	30	6	5.00	3	9	5	6	5	10	4	6	48		4th
9	Faumuina	Jonah	Kamehameha Schools	4			3	3	4	4	5	4	27	7	3.86	9	7	6	7	9	4	16	12	70		6th
9	Liu	Jayden	Kamehameha Schools	5	5	5	4	5	5	5	4	4	42	9	4.67	6	1	2	5	2	8	10	10	44		3rd
9	Miller	Nalani	Kamehameha Schools	4						3			7	2	3.50	9	9	9	9	9	18	18	18	99		
9	Ross	Simone	Kamehameha Schools	4	4					3			11	3	3.67	4	4	9	9	6	18	18	18	86		
9	Stevens	Trae	Kamehameha Schools	4	5		4	5	5	4	5	4	36	8	4.50	2	6	1	4	4	12	14	8	51		5th
11	Lake	Evan	Parker School	3			4			5			12	3	4.00	9	9	9	9	9	16	8	16	85		
11	Singh	Tejbir	Parker School	5	5		5			4			19	4	4.75	5	3	8	8	8	14	12	14	72		

Presiding Officer 1 - Ross  
 Presiding Officer 2 - Albrecht  
 Supers Presiding Officer - Kalowsky

Judge A - Dylan Menda  
 Judge B - Brent Gaston  
 Judge C - Joe Tease  
 Judge D - Florentina Smith  
 Parliamentarian - Grace Williams  
 Judge E - Paige Altonn  
 Judge F - John Alamodin  
 S. Parliamentarian - Grace Williams

# Charlotte Boteilho Storytelling

6 to Finals

CODE	PRELIMINARY ROUNDS									TOTAL	*	RECIP FRAC	FINAL ROUND					SUB TOTAL	TOTAL	RANK	★	SS	NAME / SCHOOL	
	1	2	3	4	5	6	7	8	9				1	2	3	4	5							
3T1	4	3	4	3	4	1	2	3	3	27	*		6	5	5	6	1	23	50	5th		1	Dylan Dinio / 'Iolani School	
7T2	5	5	6	1	6	6	5	5	5	44													Shayla Wingate / Kahuku High & Inter Schl	
7T3	2	2	3	6	1	3	3	1	1	22	*		3	2	4	2	5	16	38	2nd		4	Josie Rackley / Kahuku High & Inter Schl	
7T4	N	O		S	H	O	W																	
7T5	1	4	6	4	3	1	3	4	4	30	*		5	4	3	3	6	21	51	6th		1	Evelyn Torres / Kahuku High & Inter Schl	
7T6	4	6	1	5	6	6	1	1	1	31													Morgan Thompson / Kahuku High & Inter Schl	
7T7	6	3	4	2	3	3	5	6	3	35													Arwen Blimes / Kahuku High & Inter Schl	
9T8	2	2	3	5	1	2	4	2	6	27	*		4	3	6	5	2	20	47	4th		2	Lily Mitchell / Kamehameha Schools	
9T9	6	1	1	6	2	4	2	3	2	27	*		2	6	2	4	4	18	45	3rd		3	Nainoa Arincorayan / Kamehameha Schools	
9T10	1	1	2	1	2	4	1	2	5	19	*		1	1	1	1	3	7	26	1st		5	Anela Lee / Kamehameha Schools	
16T11	3	6	2	4	5	5	6	6	2	39													Jennifer Pacis / McKinley High School	
16T12	3	4	5	3	5	5	6	5	6	42													Pumehana Holmes / McKinley High School	
17T13	5	5	5	2	4	2	4	4	4	35													Jenoha Orias / Moanalua High School	

# Program Oral Interpretation

6 to Finals; 2 to Nationals

CODE	PRELIMINARY ROUNDS									TOTAL	*	RECIP FRAC	FINAL ROUND					SUB TOTAL	TOTAL	RANK	★	SS	NAME / SCHOOL	
	1	2	3	4	5	6	7	8	9				1	2	3	4	5							
6P1	1	2	4	3	5	5	3	2	1	26	*		2	3	2	5	5	17	43	3rd		3	Lauren Baker / Trinity Christian School	
7P2	4	4	4	2	2	1	6	6	5	34													McKenzie Wingate / Kahuku High & Inter Schl	
7P3	2	1	1	5	3	3	1	1	6	23	*		4	5	5	4	2	20	43	4th		2	Kayla Pitt / Kahuku High & Inter Schl	
9P4	5	5	3	5	3	3	6	6	6	42													Kaylah Toves / Kamehameha Schools	
9P5	5	3	2	4	2	2	2	3	1	24	*		6	4	6	6	4	26	50	5th		1	Nainoa Visperas / Kamehameha Schools	
9P6	2	3	2	1	1	1	2	3	2	17	*		1	1	1	1	1	5	22	1st	★	5	Nainoa Arincorayan / Kamehameha Schools	
9P7	4	4	3	4	6	6	4	5	4	40													Zoe Mia / Kamehameha Schools	
10P8	6	6	5	6	6	6	4	5	3	47													Sophia Abe / University Laboratory School	
10P9	3	5	6	3	4	2	5	4	3	35													Brianna Tancinco / University Laboratory School	
11P10	3	2	6	2	4	4	1	1	6	29	*		5	6	4	3	6	24	53	6th		1	Hunter Kalahiki-Arnbrister / Parker School	
11P11	6	6	5	6	5	5	5	4	5	47													Noe Mitchell / Parker School	
16P12	1	1	1	1	1	4	3	2	2	16	*		3	2	3	2	3	13	29	2nd	★	4	Pumehana Holmes / McKinley High School	
17P13	6	6	6	6	6	6	6	6	4	52													Natasha Freeman / Moanalua High School	
													* Tie broken by cume score of final round											



# Karen Miyakado Humorous Interpretation

6 to Finals; 2 to Nationals

CODE	PRELIMINARY ROUNDS									TOTAL	*	RECIP FRAC	FINAL ROUND					SUB TOTAL	TOTAL	RANK	*	SS	NAME / SCHOOL			
	1	2	3	4	5	6	7	8	9				1	2	3	4	5									
2H1	2	4	3	3	2	4	3	4	5	30																Lauren Luke / Punahou School
2H2	4	3	4	1	3	4	5	5	4	33																Alyssa Alvarez / Punahou School
3H3	2	2	5	2	3	2	3	3	2	24	*		3	1	4	1	4	13	37	2nd	*	4				Jordan Shiu / 'Iolani School
5H4	3	2	5	2	4	3	4	3	4	30																Justine Bisquera / Damien Memorial School
7H5	2	2	5	3	1	1	2	2	2	20	*		4	6	2	3	3	18	38	3rd	*	3				Savannah Peskin / Kahuku High & Inter Schl
7H6	3	3	4	4	2	2	4	4	5	31																Morgan Thompson / Kahuku High & Inter Schl
7H7	4	3	2	1	4	3	2	1	1	21	*		5	5	5	4	2	21	42	5th		1				Sanoë Marsh / Kahuku High & Inter Schl
7H8	3	4	3	2	5	4	5	3	1	30																Christopher Wolfersberger / Kahuku High & Inter
7H9	4	1	1	4	5	5	2	5	2	29																Josie Rackley / Kahuku High & Inter Schl
8H10	N	O		S	H	O	W																			
9H11	1	1	1	1	1	1	1	2	3	12	*		2	2	1	2	1	8	20	1st		5				Kaleonahenahe Green / Kamehameha Schools
9H12	5	4	3	5	2	5	5	5	3	37																Lily Mitchell / Kamehameha Schools
9H13	5	5	4	5	5	5	1	4	5	39																Kealaula Cabilao / Kamehameha Schools
9H14	5	5	2	5	1	1	3	2	4	28																Liliana Ciraulo / Kamehameha Schools
10H15	1	5	2	4	4	3	4	1	3	27	*		1	4	3	5	5	18	45	6th		1				Seth Royston / University Lab School
16H16	1	1	1	3	3	2	1	1	1	14	*		6	3	6	6	6	27	41	4th		2				Aiden Reyes / McKinley High School

# Dramatic Interpretation

6 to Finals; 2 to Nationals

CODE	PRELIMINARY ROUNDS									TOTAL	*	RECIP FRAC	FINAL ROUND					SUB TOTAL	TOTAL	RANK	*	SS	NAME / SCHOOL			
	1	2	3	4	5	6	7	8	9				1	2	3	4	5									
2A1	4	2	4	1	1	2	6	2	2	24	*		4	6	4	4	1	19	43	4th		2				Mari Shoop / Punahou School
2A2	4	6	2	3	1	2	3	4	1	26	*	4.33	6	4	2	6	6	24	50	5th		1				Ellie Sampson / Punahou School
3A3	3	3	3	2	3	1	3	1	6	25	*		5	5	6	5	4	25	50	6th		1				Mariko Jurcsak / 'Iolani School
4A4	6	6	6	1	6	6	4	5	2	42																Darlene Mae Pozas / Leilehua High School
7A5	5	3	3	4	4	5	5	6	5	40																Savannah Peskin / Kahuku High & Inter Schl
7A6	4	4	4	5	5	3	2	2	4	33																Morgan Thompson / Kahuku High & Inter Schl
7A7	6	5	6	6	6	6	6	6	6	53																Arwen Blimes / Kahuku High & Inter Schl
7A8	1	2	4	6	5	4	5	4	5	36																Jane Bradshaw / Kahuku High & Inter Schl
8A9	2	2	2	2	2	1	1	1	3	16	*		1	3	3	2	5	14	30	1st	*	5				Jessica Chang / Aiea High School
9A10	3	4	1	1	2	5	3	2	1	22	*		2	1	5	3	2	13	35	3rd		3				Anela Lee / Kamehameha Schools
9A11	6	6	6	6	6	6	6	6	6	54																Zoe Mia / Kamehameha Schools
9A12	1	1	1	2	4	2	4	6	1	22	*		3	2	1	1	3	10	32	2nd	*	4				Mahina Amoy / Kamehameha Schools
9A13	1	1	5	6	3	6	5	3	5	35																Sir Cornwell / Kamehameha Schools
10A14	2	1	5	4	4	4	1	3	2	26		4.28														Shania Gabrillo / University Lab School
11A15	6	6	5	5	2	5	6	5	6	46																Hana-Lei Ji / Parker School
12A16	5	6	3	3	1	1	4	1	3	27																Samantha Pialda / Maryknoll High School
13A17	3	4	1	3	5	3	1	5	3	28																Cormac Hurley / Saint Louis School
15A18	5	5	6	6	6	4	2	4	4	42																Alexia Cabiness / Waiialua High School
16A19	2	3	2	4	3	3	2	3	4	26		3.33														Aiden Reyes / McKinley High School
18A20	6	5	6	5	6	6	6	6	6	52																Halia Buchal / Hawaii Prep Academy

\* Tie broken by cume score of final round



# Fely Serra Original Oratory

6 to Finals; 2 to Nationals

CODE	PRELIMINARY ROUNDS									TOTAL	*	RECIP FRAC	FINAL ROUND					SUB TOTAL	TOTAL	RANK	*	SS	NAME / SCHOOL		
	1	2	3	4	5	6	7	8	9				1	2	3	4	5								
3Y1	4	5	5	3	3	3	3	2	1	29															Emily Tom / 'Iolani School
3Y2	5	4	5	5	5	5	5	4	5	43															Ethan Hui / 'Iolani School
4Y3	2	3	5	5	1	1	5	1	2	25	*		2	3	3	1	2	11	36	3rd		*	3	Maggie Titus / Leilehua High School	
6Y4	5	1	2	1	2	2	1	2	3	19	*		6	4	6	2	4	22	41	4th				2	Lauren Baker / Trinity Christian School
6Y5	2	5	1	3	1	2	4	5	5	28															Mya Hunter / Trinity Christian School
8Y6	3	1	2	4	1	4	5	1	3	24	*		1	5	4	4	6	20	44	5th				1	Aiyana Bartolome / Aiea High School
9Y7	2	2	4	1	5	1	1	3	1	20	*		3	2	1	6	1	13	33	2nd	*			4	Ka'ai I / Kamehameha Schools
9Y8	3	3	4	2	4	1	3	5	1	26															Mahina Amoy / Kamehameha Schools
10Y9	4	4	3	2	3	3	5	4	5	33															Brianna Tancinco / University Lab School
10Y10	1	4	3	5	5	5	2	3	4	32															Alyssia Chen / University Lab School
10Y11	4	1	3	3	4	5	4	5	5	34															Odin McDermott / University Lab School
14Y12	1	2	1	4	3	4	2	3	2	22	*		5	6	5	5	5	26	48	6th				1	Trista Silva / Kalani High School
16Y13	3	5	5	4	2	5	1	5	4	34															Ryan Vanairsdale / McKinley High School
16Y14	1	2	2	1	2	2	2	2	3	17	*		4	1	2	3	3	13	30	1st	*			5	Aileen Chang / McKinley High School
16Y15	5	5	4	5	4	4	4	1	2	34															Jashmine Aranda / McKinley High School
16Y16	5	3	1	2	5	3	3	5	4	31															Ivy Chen / McKinley High School
18Y17	5	5	5	5	5	5	5	4	5	44															Zhansenk Tenintashev / Hawaii Prep Academy

# Informative Speaking

4 to Finals; 2 to Nationals

CODE	PRELIMINARY ROUNDS									TOTAL	*	RECIP FRAC	FINAL ROUND					SUB TOTAL	TOTAL	RANK	*	SS	NAME / SCHOOL		
	1	2	3	4	5	6	7	8	9				1	2	3	4	5								
8Z1	1	3	2	1	2	4	2	3	2	20	*		2	2	3	4	1	12	32	2nd	*			4	Aiyana Bartolome / Aiea High School
9Z2	N	O	S	H	O	W																			
9Z3	4	2	1	3	3	1	1	6	3	24	*		3	3	1	3	3	13	37	3rd	*			3	Taylor Takahashi / Kamehameha Schools
10Z4	6	4	6	6	4	5	6	4	4	45															Odin McDermott / University Lab School
10Z5	3	6	3	5	6	2	5	5	5	40		230													Kyler Nishimoto / University Lab School
10Z6	5	5	4	4	5	6	4	1	6	40	*	268	4	4	4	2	2	16	56	4th				2	Emily Greaver / University Lab School
16Z7	2	1	5	2	1	3	3	2	1	20	*		1	1	2	1	4	9	29	1st				5	Aileen Chang / McKinley High School

# Impromptu Speaking

CODE	PRELIMINARY ROUNDS									TOTAL	*	RECIP FRAC	FINAL ROUND					SUB		RANK	*	SS	NAME / SCHOOL				
	1	2	3	4	5	6	7	8	9				1	2	3	4	5	TOTAL	TOTAL								
2W1	1	4	6	3	3	5	6	6	4	<b>38</b>																Maile Maguleas / Punahou School	
2W2	2	1	4	4	5	3	4	2	2	<b>27</b>	*	3.78	3	5	6	3	2	<b>19</b>	<b>46</b>	6th				1	Ryu Kawajiri / Punahou School		
3W3	2	6	3	2	1	1	3	5	3	<b>26</b>	*		1	4	3	2	4	<b>14</b>	<b>40</b>	3rd				3	Maria Stevenson / 'Iolani School		
3W4	4	6	6	3	6	5	5	3	6	<b>44</b>																Connor Lee / 'Iolani School	
6W5	6	6	6	6	5	6	6	4	4	<b>49</b>																Kaila Baker / Trinity Christian School	
7W6	3	1	1	1	1	1	1	1	6	<b>16</b>	*		5	3	5	6	6	<b>25</b>	<b>41</b>	4th				2	Jay Phung / Kahuku High & Inter Schl		
7W7	5	5	2	2	6	1	4	6	6	<b>37</b>																Sanoe Marsh / Kahuku High & Inter Schl	
8W8	5	5	6	6	2	6	5	6	5	<b>46</b>																Jasci-Ann Fikany / Aiea High School	
9W9	5	5	5	5	6	3	2	6	1	<b>38</b>																Elijah Lee / Kamehameha Schools	
9W10	2	1	3	1	1	6	1	3	3	<b>21</b>	*		6	6	1	5	5	<b>23</b>	<b>44</b>	5th				1	Nainoa Visperas / Kamehameha Schools		
9W11	3	6	5	3	2	3	1	1	1	<b>25</b>	*		2	2	4	4	1	<b>13</b>	<b>38</b>	2nd				4	Ka'ai I / Kamehameha Schools		
10W12	4	2	2	6	6	5	2	5	5	<b>37</b>																Alisha Nijjar / University Lab School	
11W13	6	2	4	4	2	4	2	3	6	<b>33</b>																Jamie Saito / Parker School	
11W14	4	3	1	2	3	2	3	6	3	<b>27</b>		3.75														Anna Gaglione / Parker School	
11W15	6	4	4	6	4	4	3	4	2	<b>37</b>																Everett Gordon / Parker School	
12W16	3	3	1	6	4	6	6	2	4	<b>35</b>																Randy Solomon / Maryknoll High School	
16W17	1	4	3	1	4	2	5	1	6	<b>27</b>	*	4.70	4	1	2	1	3	<b>11</b>	<b>38</b>	1st				5	Ryan Vanairsdale / McKinley High School		
16W18	1	3	6	5	3	2	6	4	2	<b>32</b>																Thompson Wong / McKinley High School	
16W19	6	6	5	5	5	6	6	5	5	<b>49</b>																Jordan Lam / McKinley High School	
18W20	6	2	2	4	6	4	4	2	1	<b>31</b>																Mark Schiller / Hawaii Prep Academy	

\* Tie broken by cume score of final round



# Beginning Public Forum Debate

CODE	ROUND 1			ROUND 2			ROUND 3			ROUND 4			ROUND 5			TOTALS		
1R1	W	W	L	L	W	W	L	L	L	L	W/S/L	2 / 0 / 3	Ballot	6 - 9	Spkr Pts	376		
	W	3-0	L	0-3	W	3-0	L	0-3	L	0-3								
	W		L		W		L		L									
	23 21 27	71	27 23 26	76	25 27 29	81	26 24 22	72	26 28 22	76								
N	11-16	A	6-7	A	5-6	A	9-8	N	11-11									
2R2	L	L	L	L	W	W	W	L	L	W	W/S/L	2 / 0 / 3	Ballot	6 - 9	Spkr Pts	365		
	L	0-3	L	0-3	W	3-0	L	1-2	W	2-1								
	L		L		W		L		W									
	20 24 24	68	21 26 22	69	25 27 28	80	23 28 23	74	22 24 28	74								
A	3-4	N	9-8	N	11-16	A	6-7	N	11-15									
2R3	W	W	L	L	L	W	L	L	L	L	W/S/L	2 / 0 / 3	Ballot	7 - 8	Spkr Pts	379		
	W	2-1	L	1-2	W	2-1	L	1-2	L	1-2								
	L		W		W		W		W									
	23 27 23	73	20 26 22	68	26 27 27	80	23 28 27	78	26 25 29	80								
A	3-5	N	9-9	N	11-13	N	11-14	N	11-12									
3R4	W	W	W	W	W	W	W	W	W	W	W/S/L	5 / 0 / 0	Ballot	15 - 0	Spkr Pts	399	1st	
	W	3-0	W	3-0	W	3-0	W	3-0	W	3-0								
	W		W		W		W		W									
	21 26 27	74	28 24 28	80	28 24 27	79	26 29 27	82	26 28 30	84								
N	2-2	N	1-11	N	9-9	N	11-15	A	11-10									
3R5	L	L	L	W	L	L	L	W	W	W	W/S/L	3 / 0 / 2	Ballot	9 - 6	Spkr Pts	354	5th	
	L	1-2	W	2-1	L	1-2	W	2-1	W	3-0								
	W		W		W		W		W									
	19 26 26	71	24 22 25	71	26 23 20	69	23 22 24	69	23 24 27	74								
N	2-3	N	11-12	N	9-8	N	11-13	A	5-6									
5R6	L	L	W	L	L	L	L	W	L	L	W/S/L	1 / 0 / 4	Ballot	3 - 12	Spkr Pts	365		
	L	0-3	L	1-2	L	0-3	W	2-1	L	0-3								
	L		L		L		W		L									
	25 19 26	70	25 25 26	76	25 26 27	78	25 23 26	74	19 22 26	67								
N	6-7	A	11-10	N	1-1	N	11-11	N	3-5									
6R7	W	W	W	W	W	W	L	W	L	L	W/S/L	4 / 0 / 1	Ballot	11 - 4	Spkr Pts	400	3rd	
	W	3-0	W	3-0	W	2-1	W	2-1	L	1-2								
	W		W		L		W		W									
	27 26 28	81	28 27 28	83	28 25 27	80	22 30 25	77	28 26 25	79								
A	5-6	N	1-1	A	11-12	N	2-2	N	11-14									
9R8	L	L	W	W	W	W	W	W	W	W	W/S/L	4 / 0 / 1	Ballot	12 - 3	Spkr Pts	383	2nd	
	L	1-2	W	3-0	W	2-1	W	3-0	W	3-0								
	W		W		L		W		W									
	27 26 26	79	24 28 23	75	27 28 21	76	27 24 24	75	24 27 27	78								
N	11-14	A	2-2	A	3-5	N	1-1	N	11-16									

# Beginning Public Forum Debate

CODE	ROUND 1			ROUND 2			ROUND 3			ROUND 4			ROUND 5			TOTALS			
9R9	L	L	W	W	L	L	W	W	L	W	W/S/L Ballot Spkr Pts	3 / 0 / 2 7 - 8 379	7th						
	L	1-2	W	2-1	L	0-3	W	2-1	W	2-1									
	W		L		L		L		W										
	25 30 29	84	25 28 20	73	26 22 23	71	29 26 23	78	21 25 27	73									
N	11-15	A	2-3	A	3-4	A	11-10	N	11-13										
11R10	L	W	L	W	L	W	L	L	L	L	W/S/L Ballot Spkr Pts	3 / 0 / 2 7 - 8 370	8th						
	W	2-1	W	2-1	W	2-1	L	1-2	L	0-3									
	W		W		W		W		L										
	25 20 23	68	23 24 28	75	25 23 27	75	28 23 25	76	22 25 29	76									
N	11-11	N	5-6	N	11-14	N	9-9	N	3-4										
11R11	W	L	L	L	L	L	W	L	W	W	W/S/L Ballot Spkr Pts	1 / 0 / 4 6 - 9 371							
	L	1-2	L	0-3	L	1-2	L	1-2	W	3-0									
	L		L		W		L		W										
	26 17 22	65	27 23 25	75	25 24 26	75	28 26 23	77	28 29 22	79									
A	11-10	A	3-4	N	11-15	A	5-6	A	1-1										
11R12	L	L	W	L	L	L	W	W	W	W	W/S/L Ballot Spkr Pts	2 / 0 / 3 8 - 7 392							
	L	1-2	L	1-2	L	1-2	W	3-0	W	2-1									
	W		L		W		W		L										
	28 23 23	74	27 24 24	75	27 24 27	78	28 29 30	87	28 25 25	78									
N	11-13	A	3-5	N	6-7	N	11-16	A	2-3										
11R13	W	W	W	L	W	L	W	L	W	L	W/S/L Ballot Spkr Pts	1 / 0 / 4 6 - 9 357							
	W	2-1	L	1-2	L	1-2	L	1-2	L	1-2									
	L		L		L		L		L										
	28 24 20	72	25 21 27	73	27 25 25	77	21 21 23	65	21 24 25	70									
A	11-12	A	11-14	A	2-3	A	3-5	A	9-9										
11R14	W	W	L	W	W	L	W	W	W	W	W/S/L Ballot Spkr Pts	4 / 0 / 1 9 - 6 382	4th						
	W	2-1	W	2-1	L	1-2	W	2-1	W	2-1									
	L		W		L		L		L										
	28 28 24	80	24 24 29	77	27 22 24	73	24 29 22	75	29 26 22	77									
A	9-8	N	11-13	A	11-10	A	2-3	A	6-7										
11R15	W	W	W	W	W	W	L	L	W	L	W/S/L Ballot Spkr Pts	3 / 0 / 2 8 - 7 384	6th						
	W	2-1	W	3-0	W	2-1	L	0-3	L	1-2									
	L		W		L		L		L										
	27 27 28	82	28 26 26	80	27 27 24	78	23 24 22	69	25 25 25	75									
A	9-9	A	11-16	A	11-11	A	3-4	A	2-2										
11R16	L	L	L	L	L	L	L	L	L	L	W/S/L Ballot Spkr Pts	0 / 0 / 5 0 - 15 335							
	L	0-3	L	0-3	L	0-3	L	0-3	L	0-3									
	L		L		L		L		L										
	19 19 23	61	24 22 24	70	24 23 23	70	24 19 23	66	24 20 24	68									
A	1-1	N	11-15	A	2-2	A	11-12	A	9-8										

## Beginning Public Forum Debate

CODE	QUARTERFINAL			SEMIFINAL			FINAL			RESULTS
3R4	W		W	W		W	L		W	Connor Arakaki & Kyle Ching 'Iolani School <i>1st Place</i> <b>SS = 5</b>
	W	W	5 - 0	W	W	5 - 0	L	W	3 - 2	
	W	W		W	W		W	W		
	A		11-10	N		11-15	N		9-8	
3R5	L		W	L		L	L		L	Connor Lee & Mike Tran 'Iolani School <i>4th Place</i> <b>SS = 2</b>
	W	W	4 - 1	L	L	1 - 4	L	W	2 - 3	
	W	W		L	W		L	W		
	N		11-14	N		9-8	N		11-15	
6R7	L		L							Mya Hunter & Laura Dart Trinity Christian School <i>Quarterfinalist</i> <b>SS = 1</b>
	L	W	2 - 3			0 - 0			0 - 0	
	L	W								
	N		11-15							
9R8	L		W	W		W	W		L	Logan Lau & Keola Kaniho Kamehameha Schools <i>2nd Place</i> <b>SS = 4</b>
	W	W	4 - 1	W	W	4 - 1	W	L	2 - 3	
	W	W		W	L		L	L		
	N		9-9	A		3-5	A		3-4	
9R9	W		L							Joshua Ching & Kaila Labra Kamehameha Schools <i>Quarterfinalist</i> <b>SS = 1</b>
	L	L	1 - 4			0 - 0			0 - 0	
	L	L								
	A		9-8							
11R10	L		L							Elissa Mazkour & Chloe Arias Parker School <i>Quarterfinalist</i> <b>SS = 1</b>
	L	L	0 - 5			0 - 0			0 - 0	
	L	L								
	N		3-4							
11R14	W		L							Elise Barthel & McKenzie Byron Parker School <i>Quarterfinalist</i> <b>SS = 1</b>
	L	L	1 - 4			0 - 0			0 - 0	
	L	L								
	A		3-5							
11R15	W		W	L		L	W		W	Everett Gordon & Amanda Black Parker School <i>3rd Place</i> <b>SS = 3</b>
	W	L	3 - 2	L	L	0 - 5	W	L	3 - 2	
	W	L		L	L		W	L		
	A		6-7	A		3-4	A		3-5	



# Advanced Public Forum Debate

CODE	ROUND 1			ROUND 2			ROUND 3			ROUND 4			ROUND 5			TOTALS			
2F1	L	L	L	L	L	L	W	W	L	L	L	L	L	L	L	W/S/L	<u>1 / 0 / 4</u>		
	L	0-3	L	0-3	W	3-0	L	0-3	L	0-3	L	0-3	Ballot	<u>3 - 12</u>					
	L		L		W		L		L		L				Spkr Pts				<u>374</u>
	25	26	24	75	23	22	26	71	27	28	21	76	27	22		28	77	23	
A			9-8	N			2-3	A			8-7	N			3-6	A			9-9
2F2	W	L	L	L	L	L	W	L	L	L	L	W	W	W	W	W/S/L	<u>1 / 0 / 4</u>		
	L	1-2	L	1-2	L	1-2	L	1-2	L	0-3	W	2-1	Ballot	<u>5 - 10</u>					
	L		W		W		L		L		L				Spkr Pts				<u>369</u>
	26	24	25	75	22	22	25	69	19	28	25	72	25	29		22	76	27	
A			9-9	N			2-4	A			11-12	A			3-5	A			9-11
2F3	W	W	W	W	W	L	W	L	W	L	W	W	W	W	W	W/S/L	<u>3 / 0 / 2</u>		
	W	2-1	W	3-0	L	1-2	L	1-2	L	1-2	W	2-1	Ballot	<u>9 - 6</u>					
	L		W		L		L		L		L				Spkr Pts				<u>400</u>
	26	27	27	80	26	24	27	77	27	27	26	80	27	28		29	84	30	
A			9-10	A			2-1	A			3-5	A			9-8	A			8-7
2F4	W	W	W	W	W	L	W	L	W	L	W	W	W	W	W	W/S/L	<u>3 / 0 / 2</u>		
	W	2-1	W	2-1	L	1-2	L	1-2	L	1-2	W	2-1	Ballot	<u>8 - 7</u>					
	L		L		L		L		L		L				Spkr Pts				<u>396</u>
	28	27	28	83	23	23	22	68	28	24	28	80	25	29		28	82	27	
A			9-11	A			2-2	A			3-6	A			9-10	A			11-12
3F5	W	W	L	L	L	W	W	W	W	L	L	L	L	L	L	W/S/L	<u>3 / 0 / 2</u>		
	W	3-0	L	1-2	W	2-1	W	2-1	W	3-0	L	1-2	Ballot	<u>10 - 5</u>					
	W		W		W		W		W		W				Spkr Pts				<u>405</u>
	27	28	28	83	25	26	27	78	26	28	27	81	27	30		26	83	22	
N			11-12	N			9-9	N			2-3	N			2-2	N			9-8
3F6	W	W	L	W	L	W	W	W	W	L	L	L	L	L	L	W/S/L	<u>4 / 0 / 1</u>		
	W	2-1	W	2-1	W	2-1	W	2-1	W	3-0	L	1-2	Ballot	<u>10 - 5</u>					
	L		W		W		W		W		W				Spkr Pts				<u>404</u>
	26	28	27	81	24	26	27	77	26	25	29	80	28	24		29	81	27	
A			8-7	N			9-11	N			2-4	A			2-1	N			9-10
8F7	L	L	L	L	L	L	L	L	L	L	L	L	L	L	L	W/S/L	<u>0 / 0 / 5</u>		
	L	1-2	L	1-2	L	0-3	L	1-2	L	1-2	L	1-2	Ballot	<u>4 - 11</u>					
	W		W		L		W		W		W				Spkr Pts				<u>387</u>
	25	28	26	79	27	27	29	83	25	26	21	72	25	24		27	76	25	
N			3-6	N			9-8	N			2-1	N			9-9	N			2-3
9F8	W	W	W	W	W	W	L	W	W	W	W	W	W	W	W	W/S/L	<u>5 / 0 / 0</u>		
	W	3-0	W	2-1	W	2-1	W	2-1	W	2-1	W	2-1	Ballot	<u>11 - 4</u>					
	W		L		L		W		W		L				Spkr Pts				<u>408</u>
	27	27	25	79	29	29	27	85	27	27	27	81	25	29		29	83	24	
N			2-1	A			8-7	A			9-11	N			2-3	A			3-5





# Novice Lincoln-Douglas Debate

CODE	ROUND 1			ROUND 2			ROUND 3			ROUND 4			ROUND 5			TOTALS			
1N1	W	W	W	L			L	L	W	L	W/S/L Ballot Spkr Pts	1 / 0 / 3 6 - 6 311							
	W	3-0	L	1-2		0-0	L	1-2	L	1-2									
	W		L				W		L										
	27	27	25	79	25	25	25	75						0	27	28	26	81	26
A	9-10			A	11-14			BYE			N	3-5			A	9-8			
2N2			W	W	L	L	L	L	L	W	W/S/L Ballot Spkr Pts	2 / 0 / 2 4 - 8 316	8th						
		0-0	W	2-1	L	0-3	L	0-3	W	2-1									
			L		L		L		W										
			0	24	28	22	74	27	28	28				83	28	25	28	81	22
	BYE			A	10-11			N	9-8			A	11-12			N	11-13		
2N3	W	W	L	W			W	W	W	L	W/S/L Ballot Spkr Pts	3 / 0 / 1 8 - 4 308	5th						
	W	2-1	W	2-1		0-0	W	3-0	L	1-2									
	L		W				W		L										
	26	26	24	76	28	21	24	73						0	27	27	28	82	24
A	4-6			N	3-4			BYE			N	11-16			A	11-14			
3N4	W	W	W	L	W	W	W	W	L	W	W/S/L Ballot Spkr Pts	3 / 0 / 1 9 - 3 295	3rd						
	W	3-0	L	1-2	W	3-0		0-0	W	2-1									
	W		L		W				W										
	28	24	23	75	28	20	21	69	29	25				25	79			0	21
N	11-12			A	2-3			N	4-6			BYE			N	11-15			
3N5			L	L	W	W	W	W	W	W	W/S/L Ballot Spkr Pts	3 / 0 / 1 9 - 3 315	2nd						
		0-0	L	1-2	W	3-0	W	2-1	W	3-0									
			W		W		W		W										
			0	22	23	29	74	24	28	25				77	29	29	25	83	25
	BYE			N	9-10			A	10-11			A	1-1			A	11-16		
4N6	L	L	L	L	L	L	W	L			W/S/L Ballot Spkr Pts	0 / 0 / 4 2 - 10 299							
	L	1-2	L	0-3	L	0-3	L	1-2		0-0									
	W		L		L		L												
	26	25	25	76	24	27	23	74	28	22				24	74	27	22	26	75
N	2-3			A	11-15			A	3-4			A	10-11			BYE			
6N7											W/S/L Ballot Spkr Pts	0 / 0 / 0 0 - 0 0							
		0-0		0-0		0-0		0-0		0-0									
			0			0			0						0				0
9N8			W	W	W	W	L	W	L	W	W/S/L Ballot Spkr Pts	4 / 0 / 0 10 - 2 330	1st						
		0-0	W	3-0	W	3-0	W	2-1	W	2-1									
			W		W		W		W										
			0	24	29	28	81	27	29	28				84	25	27	29	81	28
	BYE			A	11-13			A	2-2			N	11-15			N	1-1		

# Novice Lincoln-Douglas Debate

CODE	ROUND 1			ROUND 2			ROUND 3			ROUND 4			ROUND 5			TOTALS						
9N9																			W/S/L Ballot Spkr Pts	<u>0 / 0 / 0</u> <u>0 - 0</u> <u>0</u>		
			0-0			0-0			0-0						0-0							
			0			0			0						0							
NS																						
9N10	L	L		W	W		L	L		W	W								W/S/L Ballot Spkr Pts	<u>2 / 0 / 2</u> <u>4 - 8</u> <u>291</u>		
	L	0-3		W	2-1		L	0-3		W	2-1				0-0							
	L			L			L			L												
	25	22	23	70	24	23	21	68	26	24	26	76	28	24	25	77			0			
	N			1-1	A			3-5	N			11-16	A			11-14	BYE					
10N11				L	L		L	L		L	W		W	W		L	L		W/S/L Ballot Spkr Pts	<u>1 / 0 / 3</u> <u>4 - 8</u> <u>307</u>		
			0-0	L	1-2		L	0-3		W	2-1		L	L		1-2						
			0	24	28	24	76	23	28	24	75	27	24	27	78	27	24	27			78	
	BYE				N			2-2	N			3-5	N			4-6	A			11-12		
11N12	L	L					W	W		W	W		L	W		W	W		W/S/L Ballot Spkr Pts	<u>3 / 0 / 1</u> <u>8 - 4</u> <u>322</u>		
	L	0-3				0-0	W	3-0		W	3-0		W	2-1		W	2-1					
	L						W			W			W			W						
	26	24	19	69				0	28	27	24	79	30	28	30	88	29	29	28	86		
	A			3-4	BYE				N			11-13	N			2-2	N			10-11		
11N13	W	W		L	L		L	L		L				W		L	L		W/S/L Ballot Spkr Pts	<u>1 / 0 / 3</u> <u>4 - 8</u> <u>297</u>		
	W	3-0		L	0-3		L	0-3			0-0		L	1-2		L	1-2					
	W			L			L							L		L						
	24	25	25	74	22	27	25	74	24	27	21	72				0	23	27	27	77		
	A			11-16	N			9-8	A			11-12	BYE				A			2-2		
11N14				W	W		L	L		L	L		L	L		W	W		W/S/L Ballot Spkr Pts	<u>2 / 0 / 2</u> <u>5 - 7</u> <u>289</u>		
			0-0	W	2-1		L	0-3		L	1-2		W	2-1		W	2-1					
			0	26	27	25	78	19	22	16	57	25	20	29	74	24	29	27			80	
	BYE				N			1-1	A			11-15	N			9-10	N			2-3		
11N15				W	W		W	W		W	L		L	W		L	L		W/S/L Ballot Spkr Pts	<u>2 / 0 / 2</u> <u>8 - 4</u> <u>301</u>		
			0-0	W	3-0		W	3-0		L	1-2		L	1-2		L	1-2					
			0	25	28	25	78	25	27	23	75	24	24	27	75	25	26	22			73	
	BYE				N			4-6	N			11-14	A			9-8	A			3-4		
11N16	L	L					W	W		L	L		L	L		L	L		W/S/L Ballot Spkr Pts	<u>1 / 0 / 3</u> <u>3 - 9</u> <u>275</u>		
	L	0-3				0-0	W	3-0		L	0-3		L	0-3		L	0-3					
	L						W			L			L			L						
	21	19	22	62				0	26	26	26	78	25	25	24	74	18	25	18	61		
	N			11-13	BYE				A			9-10	A			2-3	N			3-5		

## Novice Lincoln-Douglas Debate

CODE	QUARTERFINAL	SEMIFINAL	FINAL	RESULTS
2N2	W L L	L 1 - 4		0 - 0
				0 - 0
	A	9-8		
				Carson Loughridge Punahou School <i>Quarterfinalist</i> <b>SS = 1</b>
2N3	L L W	W 3 - 2	L L W	W 3 - 2
				L L W
	N	11-12	N	3-5
				Tilde Oyster Punahou School <i>2nd Place</i> <b>SS = 4</b>
3N4	W W L	L 2 - 3		0 - 0
				0 - 0
	A	11-15		
				Moana Ueda 'Iolani School <i>Quarterfinalist</i> <b>SS = 1</b>
3N5	W W W	W 4 - 1	W L L	L 2 - 3
				W W W
	A	11-14	A	2-3
				William Heyler 'Iolani School <i>3rd Place</i> <b>SS = 3</b>
9N8	L W W	W 4 - 1	W L L	L 1 - 4
				L L L
	N	2-2	A	11-15
				Noah Blaisdell Kamehameha Schools <i>4th Place</i> <b>SS = 2</b>
11N12	W W L	L 2 - 3		0 - 0
				0 - 0
	A	2-3		
				Brayden Byron Parker School <i>Quarterfinalist</i> <b>SS = 1</b>
11N14	L L L	L 1 - 4		0 - 0
				0 - 0
	N	3-5		
				Colin Klimt Parker School <i>Quarterfinalist</i> <b>SS = 1</b>
11N15	L L W	W 3 - 2	L W W	W 4 - 1
				W W L
	N	3-4	N	9-8
				Rachel Pessah Parker School <i>1st Place</i> <b>SS = 5</b>

# Joey Miyamoto Championship Lincoln-Douglas Debate

CODE	ROUND 1			ROUND 2			ROUND 3			ROUND 4			ROUND 5			TOTALS			
2C1	W	W	L	W	W	W	L	L	W	W	W/S/L Ballot Spkr Pts	4 / 0 / 1 10 - 5 406	3rd						
	W	3 - 0	W	2 - 1	W	2 - 1	L	1 - 2	W	2 - 1									
	W		W		L		W		L										
	27	28	29	84	26	29	25	80	29	25				29	83	25	26	27	78
A	4-10		N	2-6		A	2-3		N	11-15		A	3-9						
2C2	W	W	W	L	L	W	W	W	L	L	W/S/L Ballot Spkr Pts	3 / 0 / 2 9 - 6 398	8th						
	W	3 - 0	L	1 - 2	W	2 - 1	W	2 - 1	L	1 - 2									
	W		L		W		L		W										
	26	28	26	80	27	23	26	76	27	30				26	83	29	27	22	78
N	2-3		A	11-15		N	6-11		A	2-6		N	9-13						
2C3	L	L	L	L	L	L	L	L	L	L	W/S/L Ballot Spkr Pts	0 / 0 / 5 2 - 13 384							
	L	0 - 3	L	1 - 2	L	1 - 2	L	0 - 3	L	0 - 3									
	L		W		W		L		L										
	26	27	25	78	25	26	29	80	22	24				24	70	27	24	24	75
A	2-2		N	11-16		N	2-1		A	3-9		A	10-14						
2C4	L	W	W	L	L	L	L	L	L	L	W/S/L Ballot Spkr Pts	1 / 0 / 4 3 - 12 388							
	W	2 - 1	L	1 - 2	L	0 - 3	L	0 - 3	L	0 - 3									
	W		L		L		L		L										
	28	26	26	80	23	27	25	75	26	24				27	77	28	27	27	82
N	2-7		A	2-5		A	9-13		N	3-8		N	7-12						
2C5	L	L	L	W	L	L	L	L	L	L	W/S/L Ballot Spkr Pts	1 / 0 / 4 3 - 12 396							
	L	0 - 3	W	2 - 1	L	0 - 3	L	1 - 2	L	0 - 3									
	L		W		L		W		L										
	27	26	24	77	22	29	28	79	30	24				25	79	30	27	29	86
A	3-8		N	2-4		A	2-7		N	4-10		N	6-11						
2C6	L	W	W	L	L	L	L	L	L	L	W/S/L Ballot Spkr Pts	1 / 0 / 4 4 - 11 388							
	W	2 - 1	L	1 - 2	L	0 - 3	L	1 - 2	L	0 - 3									
	W		L		L		W		L										
	20	29	28	77	27	29	25	81	25	24				26	75	28	25	25	78
N	3-9		A	2-1		A	10-14		N	2-2		N	11-16						
2C7	W	L	L	L	W	W	W	W	W	W	W/S/L Ballot Spkr Pts	3 / 0 / 2 10 - 5 407	6th						
	L	1 - 2	L	1 - 2	W	3 - 0	W	2 - 1	W	3 - 0									
	L		W		W		L		W										
	28	27	25	80	25	29	29	83	28	25				28	81	27	29	21	77
A	2-4		N	7-12		N	2-5		A	11-16		N	3-8						
3C8	W	W	W	L	W	W	W	W	L	L	W/S/L Ballot Spkr Pts	3 / 0 / 2 10 - 5 414	5th						
	W	3 - 0	L	1 - 2	W	3 - 0	W	3 - 0	L	0 - 3									
	W		L		W		W		L										
	28	29	29	86	28	28	25	81	28	26				27	81	28	28	29	85
N	2-5		A	9-13		N	11-16		A	2-4		A	2-7						

# Joey Miyamoto Championship Lincoln-Douglas Debate

CODE	ROUND 1			ROUND 2			ROUND 3			ROUND 4			ROUND 5			TOTALS			
3C9	W	L	L	L	W	W	L	L	W	W	W	L	L	WIS/L Ballot Spkr Pts	2 / 0 / 3 7 - 8 387				
	L	1-2		W	2-1		L	0-3		W	3-0	L	1-2						
	L			W			L			W		W							
	24	28	27	79	27	26	24	77	25	20	27	72	29				25	24	78
A	2-6		N	4-10		A	11-15		N	2-3		N	2-1						
4C10	L	L	W	L	L	L	W	W	L	W	L	W	WIS/L Ballot Spkr Pts	2 / 0 / 3 6 - 9 397					
	L	0-3		L	1-2		L	1-2		W	2-1	W				2-1			
	L			L			W			L		W							
	26	26	28	80	28	29	22	79	23	28	26	77				30	28	24	82
N	2-1		A	3-9		N	7-12		A	2-5		N	11-15						
6C11	L	L	L	L	W	L	W	L	L	L	W	W	WIS/L Ballot Spkr Pts	1 / 0 / 4 5 - 10 398					
	L	1-2		L	0-3		L	1-2		L	0-3	W				3-0			
	W			L			L			L		W							
	25	29	28	82	27	24	22	73	28	28	24	80				27	26	28	81
A	11-16		N	10-14		A	2-2		N	9-13		A	2-5						
7C12	L	W	W	W	W	W	L	L	W	W	L	W	WIS/L Ballot Spkr Pts	4 / 0 / 1 10 - 5 403	4th				
	W	2-1		W	2-1		L	1-2		W	3-0								
	W			L			W			W									
	27	25	27	79	24	30	28	82	29	28	28	85				28	25	23	76
N	11-15		A	2-7		A	4-10		N	10-14		A	2-4						
9C13	L	L	L	W	W	W	W	W	W	W	W	W	WIS/L Ballot Spkr Pts	4 / 0 / 1 10 - 5 418	2nd				
	L	0-3		W	2-1		W	3-0		W	3-0	W				2-1			
	L			W			W			W		L							
	27	26	29	82	27	30	27	84	28	27	28	83				29	28	28	85
A	10-14		N	3-8		N	2-4		A	6-11		A	2-2						
10C14	W	W	W	W	W	W	W	W	W	W	W	W	WIS/L Ballot Spkr Pts	5 / 0 / 0 14 - 1 419	1st				
	W	3-0		W	3-0		W	2-1		W	3-0								
	W			W			L			W									
	29	28	29	86	28	26	27	81	27	28	29	84				29	29	23	81
N	9-13		A	6-11		N	2-6		A	7-12		N	2-3						
11C15	W	L	L	W	W	W	W	W	W	W	L	WIS/L Ballot Spkr Pts	3 / 0 / 2 9 - 6 400	7th					
	L	1-2		W	2-1		W	3-0		W	2-1				L	1-2			
	L			W			W			L					L				
	29	28	26	83	25	24	28	77	26	26	28				80	27	27	25	79
A	7-12		N	2-2		N	3-9		A	2-1		A	4-10						
11C16	W	W	W	W	L	L	L	L	L	L	W	W	WIS/L Ballot Spkr Pts	3 / 0 / 2 8 - 7 405					
	W	2-1		W	2-1		L	0-3		L	1-2	W				3-0			
	L			L			L			W		W							
	29	29	25	83	28	28	28	84	24	24	26	74				26	28	22	76
N	6-11		A	2-3		A	3-8		N	2-7		A	2-6						



# Joey Miyamoto Championship Lincoln-Douglas Debate

**2 Qualify to Nationals**

CODE	QTR FINAL	SEMI FINAL	FINAL	RESULTS
<b>2C1</b>	<b>W</b>	<b>W</b>	<b>W</b>	<b>L</b>
	<b>W</b>	<b>L</b>	<b>L</b>	<b>L</b>
	<b>W</b>	<b>L</b>	<b>L</b>	<b>L</b>
	A	2-7	N	9-13
				<b>10-14</b>
				<b>Zoe Payne</b>
				Punahou School
				<i>3rd Place *</i>
				<b>SS = 3</b>
<b>2C2</b>	<b>L</b>	<b>L</b>	<b>L</b>	<b>L</b>
	<b>L</b>	<b>L</b>	<b>L</b>	<b>L</b>
	<b>L</b>	<b>L</b>	<b>L</b>	<b>L</b>
	A	10-14		
				<b>Nicole Nakamoto</b>
				Punahou School
				<i>Quarterfinalist</i>
				<b>SS = 1</b>
<b>2C7</b>	<b>L</b>	<b>L</b>	<b>L</b>	<b>L</b>
	<b>L</b>	<b>L</b>	<b>L</b>	<b>L</b>
	<b>L</b>	<b>L</b>	<b>L</b>	<b>L</b>
	N	2-1		
				<b>Sascha Pakravan</b>
				Punahou School
				<i>Quarterfinalist</i>
				<b>SS = 1</b>
<b>3C8</b>	<b>L</b>	<b>W</b>	<b>W</b>	<b>W</b>
	<b>W</b>	<b>W</b>	<b>L</b>	<b>W</b>
	<b>W</b>	<b>W</b>	<b>L</b>	<b>W</b>
	N	7-12	A	10-14
				<b>9-13</b>
				<b>Matthew Sohn</b>
				'Iolani School
				<i>1st Place</i>
				<b>SS = 5</b>
<b>7C12</b>	<b>W</b>	<b>L</b>	<b>L</b>	<b>L</b>
	<b>L</b>	<b>L</b>	<b>L</b>	<b>L</b>
	<b>L</b>	<b>L</b>	<b>L</b>	<b>L</b>
	A	3-8		
				<b>Alison Marcum</b>
				Kahuku High School
				<i>Quarterfinalist</i>
				<b>SS = 1</b>
<b>9C13</b>	<b>W</b>	<b>W</b>	<b>W</b>	<b>W</b>
	<b>W</b>	<b>W</b>	<b>W</b>	<b>L</b>
	<b>W</b>	<b>W</b>	<b>W</b>	<b>L</b>
	A	11-15	A	2-1
				<b>3-8</b>
				<b>Daniel Arakawa</b>
				Kamehameha Schools
				<i>2nd Place *</i>
				<b>SS = 4</b>
<b>10C14</b>	<b>W</b>	<b>W</b>	<b>W</b>	<b>L</b>
	<b>W</b>	<b>W</b>	<b>W</b>	<b>L</b>
	<b>W</b>	<b>W</b>	<b>W</b>	<b>L</b>
	N	2-2	N	3-8
				<b>2-1</b>
				<b>Coe Trevorrow</b>
				University Lab School
				<i>4th Place</i>
				<b>SS = 2</b>
<b>11C15</b>	<b>L</b>	<b>L</b>	<b>L</b>	<b>L</b>
	<b>L</b>	<b>L</b>	<b>L</b>	<b>L</b>
	<b>L</b>	<b>L</b>	<b>L</b>	<b>L</b>
	N	9-13		
				<b>Zoe Vann</b>
				Parker School
				<i>Quarterfinalist</i>
				<b>SS = 1</b>

# Jr. Varsity Debate

CODE	ROUND 1			ROUND 2			ROUND 3			ROUND 4			ROUND 5			TOTALS			
2J1	W	W	L	L	W	W	L	W	L	L	W/S/L 3 / 0 / 2	Ballot 7 - 8	Spkr Pts 352	4th					
	W	3 - 0	L	0 - 3	W	2 - 1	W	2 - 1	L	0 - 3									
	W		L		L		W		L										
	27	24	25	76	22	27	24	73	27	25	24	76	23		22	20	65	21	21
A	11-6			N	11-8			A	2-4			N	2-3			N	11-7		
2J2	L	W	W	W	W	L	L	L	W	L	W/S/L 2 / 0 / 3	Ballot 7 - 8	Spkr Pts 344						
	W	2 - 1	W	3 - 0	L	1 - 2	L	0 - 3	L	1 - 2									
	W		W		L		L		L										
	21	20	20	61	24	25	27	76	17	27	25	69	25		21	20	66	26	22
N	11-5			A	11-7			A	2-3			N	2-4			A	11-8		
2J3	W	W	W	W	L	W	W	L	L	W	W/S/L 4 / 0 / 1	Ballot 10 - 5	Spkr Pts 369	1st					
	W	2 - 1	W	3 - 0	W	2 - 1	L	1 - 2	W	2 - 1									
	L		W		W		L		W										
	30	29	23	82	27	24	25	76	17	28	26	71	25		21	19	65	25	24
A	11-8			N	11-6			N	2-2			A	2-1			N	11-5		
2J4	W	W	W	L	L	L	W	W	W	W	W/S/L 3 / 0 / 2	Ballot 11 - 4	Spkr Pts 390	2nd					
	W	3 - 0	L	1 - 2	L	1 - 2	W	3 - 0	W	3 - 0									
	W		L		W		W		W										
	26	27	28	81	27	23	26	76	26	21	27	74	27		27	22	76	24	30
W	11-7			A	11-5			N	2-1			A	2-2			A	11-6		
11J5	W	L	L	W	W	W	L	W	W	L	W/S/L 3 / 0 / 2	Ballot 8 - 7	Spkr Pts 381	3rd					
	L	1 - 2	W	2 - 1	W	2 - 1	W	2 - 1	L	1 - 2									
	L		W		L		W		L										
	26	20	22	68	29	25	28	82	27	24	25	76	22		28	27	77	27	23
A	2-2			N	2-4			A	11-7			N	11-8			A	2-3		
11J6	L	L	L	L	W	W	W	W	L	L	W/S/L 2 / 0 / 3	Ballot 5 - 10	Spkr Pts 363						
	L	0 - 3	L	0 - 3	W	2 - 1	W	3 - 0	L	0 - 3									
	L		L		L		W		L										
	25	22	22	69	25	23	16	64	28	24	25	77	30		25	25	80	22	26
N	2-1			A	2-3			A	11-8			N	11-7			N	2-4		
11J7	L	L	L	L	L	L	L	L	W	W	W/S/L 1 / 0 / 4	Ballot 4 - 11	Spkr Pts 354						
	L	0 - 3	L	0 - 3	L	1 - 2	L	0 - 3	W	3 - 0									
	L		L		W		L		W										
	25	24	20	69	22	28	25	75	25	22	27	74	29		24	22	75	23	21
A	2-4			N	2-2			N	11-5			A	11-6			A	2-1		
11J8	L	L	W	W	L	L	W	L	L	W	W/S/L 2 / 0 / 3	Ballot 8 - 7	Spkr Pts 380						
	L	1 - 2	W	3 - 0	L	1 - 2	L	1 - 2	W	2 - 1									
	W		W		W		L		W										
	27	25	23	75	23	26	27	76	27	23	26	76	24		26	25	75	26	25
N	2-3			A	2-1			N	11-6			A	11-5			N	2-2		





# Misao Kubota Varsity Debate

**2 Qualify to Nationals**

CODE	QTR FINAL		SEMI FINAL		FINAL			RESULTS
2V3			W		L	W	W	W
			L	L	1 - 4	W	W	4 - 1
			L	L		W	L	
			A		2-4	A		11-6
								Carl Bell & Bennet Lum
								Punahou School
								<i>3rd Place</i>
								<b>SS = 3</b>
2V4			L		W	W	W	W
			W	W	4 - 1	W	W	5 - 0
			W	W		W	W	
			N		2-3	N		11-5
								Matthew Flores & Cole Okuno
								Punahou School
								<i>1st Place *</i>
								<b>SS = 5</b>
11V5			W		W	L	L	L
			W	L	3 - 2	L	L	0 - 5
			W	L		L	L	
			A		11-6	A		2-4
								Katie Carey & Emily Fetsch
								Parker School
								<i>2nd Place *</i>
								<b>SS = 4</b>
11V6			L		L	L	L	L
			L	W	2 - 3	L	L	1 - 4
			L	W		L	W	
			N		11-5	N		2-3
								Emma Laliberte & Malia Dills
								Parker School
								<i>4th Place</i>
								<b>SS = 2</b>
		0 - 0			0 - 0			0 - 0
								<b>SS = 0</b>
		0 - 0			0 - 0			0 - 0
								<b>SS = 0</b>
		0 - 0			0 - 0			0 - 0
								<b>SS = 0</b>
		0 - 0			0 - 0			0 - 0
								<b>SS = 0</b>